

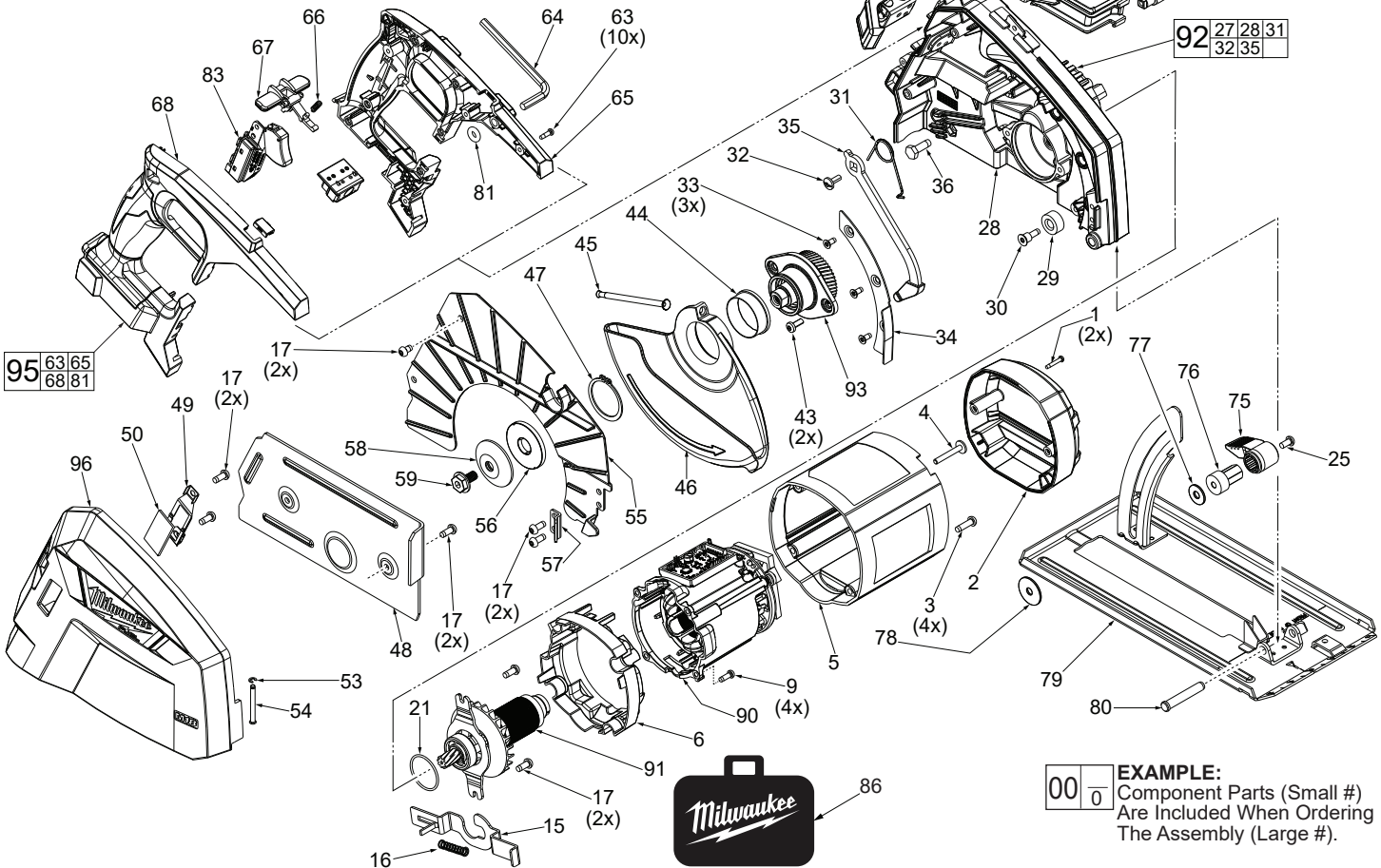


# SERVICE PARTS LIST

**BULLETIN NO.**  
**54-40-7080**

<b>SPECIFY CATALOG NO. AND SERIAL NO. WHEN ORDERING PARTS</b>		REVISED BULLETIN	DATE
<b>M18™ FUEL™ 8" METAL CUTTING SAW</b>			Jan. 2020
<b>CATALOG NO.</b>	<b>2982-20</b>	<b>STARTING SERIAL NO.</b>	<b>L16A</b>
			<b>WIRING INSTRUCTION</b> <b>See Page Three</b>

FIG.	PART NO.	DESCRIPTION OF PART	NO REQ.
1	06-82-0135	M3 x 18mm Pan Hd. Plastite T-10 Screw	(2)
2	31-15-0006	Housing Cover	(1)
3	05-78-0047	M5 x 18mm Pan Hd. TapTite T-25 Screw	(4)
4	05-81-0116	M4.5 x 18 Pan Washer Hd. ST T-20 Scr.	(1)
5	31-50-0004	Motor Housing	(1)
6	42-14-0008	Baffle	(1)
9	05-78-5316	M4 x 14mm Pan Hd. TapTite T-20 Screw	(5)
15	44-20-0039	Spindle Lock	(1)
16	40-50-0257	Spindle Lock Spring	(1)



**EXAMPLE:**  
Component Parts (Small #)  
Are Included When Ordering  
The Assembly (Large #).

FIG.	PART NO.	DESCRIPTION OF PART	NO REQ.
17	05-74-1030	M5 x 12mm Pan Hd. TapTite T-25 Screw	(10)
21	34-40-1375	O-Ring	(1)
22	06-82-0197	M6 x 14mm Pan Hd. TapTite T-30 Screw	(2)
23	45-88-0599	Washer	(2)
24	31-44-0003	Bale Handle	(1)
25	05-74-0935	10-24 Pan Hd. Hex Recess Mach. Scr.	(1)
26	44-10-0004	Lower Guard Lever	(1)
27	45-08-0036	Lower Guard Shaft	(1)
28	-----	Gearcase with Needle Bearing	(1)
29	42-38-0224	Rubber Bumper	(1)
30	45-04-0485	Bumper Screw	(1)
31	40-50-0356	Torsion Spring	(1)
32	06-82-5561	10-24 Pan Hd. TapTite T-25 Screw	(1)
33	45-04-0004	M4 x 9.5mm Flat Hd. T-20 Screw	(3)
34	43-56-0014	Chip Guide Plate	(1)
35	44-14-0016	Lower Guard Link Assembly	(1)
36	06-75-5860	1/4-20 x 3/4 Hex Hd. Screw	(1)
43	06-82-0097	M5 x 10mm Pan Hd. TapTite T-25 Screw	(2)
44	45-14-0021	Lower Guard Sleeve	(1)
45	40-50-0045	Guard Spring	(1)
46	28-41-0021	Lower Guard	(1)
47	34-60-0860	External Retaining Ring	(1)
48	28-20-0011	Collector Cover Plate	(1)
49	44-86-0011	Window Retainer	(1)
50	43-50-0016	Glass Window	(1)
53	34-60-0401	E-Ring	(1)
54	44-60-0106	Front Latch Pin	(1)
55	43-54-0002	Inner Blade Guard	(1)
56	43-34-0091	Inner Flange	(1)
57	42-70-0051	Cover Clip	(1)
58	43-34-0093	Outer Flange	(1)

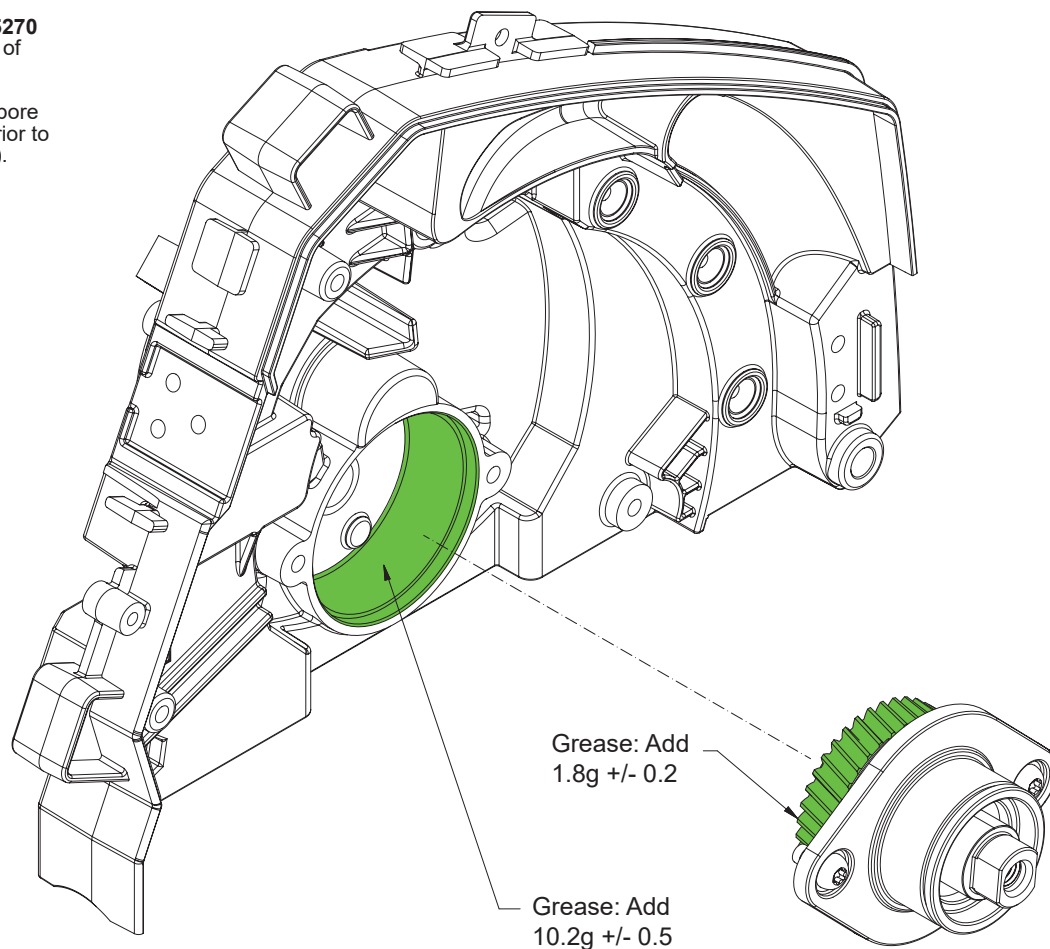
FIG.	PART NO.	DESCRIPTION OF PART	NO REQ.
59	06-75-0035	5/16-18 x 9/16" Blade Screw	(1)
61	05-74-0975	10-24 x 1/2 Pan Hd. tapTite T-25 Screw	(4)
62	31-15-0007	Wire Cover	(1)
63	06-82-0121	M3.5 x 12mm Pan Hd. ST T-10 Screw	(10)
64	49-96-0345	Hex Wrench	(1)
65	-----	Handle Halve Cover-Left	(1)
66	40-50-1760	Spring	(1)
67	42-42-0345	Switch Lock-Out Button	(1)
68	-----	Handle Halve Support-Right	(1)
75	44-10-0018	Depth Lever	(1)
76	45-08-0017	Depth Shaft	(1)
77	45-88-8461	Washer	(4)
78	45-88-0832	Washer (Big)	(1)
79	45-16-0013	Shoe Assembly	(1)
80	44-60-1180	Pivot Pin	(1)
81	34-40-0164	O-Ring	(1)
83	23-66-5027	On-Off Switch	(1)
84	12-20-9092	Service Nameplate (Not Shown)	(1)
85	10-20-2999	Warning Label (Not Shown)	(1)
86	42-55-6150	Carrying Case	(1)
90	14-20-0183	Electronics Assembly	(1)
91	16-01-0028	Rotor Assembly	(1)
92	28-14-0022	Gearcase Assembly	(1)
93	43-78-0156	Spindle/Gear Assembly	(1)
94	44-20-0042	Latch Assembly	(1)
95	31-44-0143	Handle Assembly	(1)
96	28-20-0017	Chip Collector Cover Assembly	(1)

**MILWAUKEE TOOL • www.milwaukeetool.com**  
13135 W. LISBON RD., BROOKFIELD, WI 53005  
Drwg. 1

**LUBRICATION:**  
**Type 'Y' Grease, No. 49-08-5270**  
Liberaly coat the pinion teeth of Rotor Assembly (91).

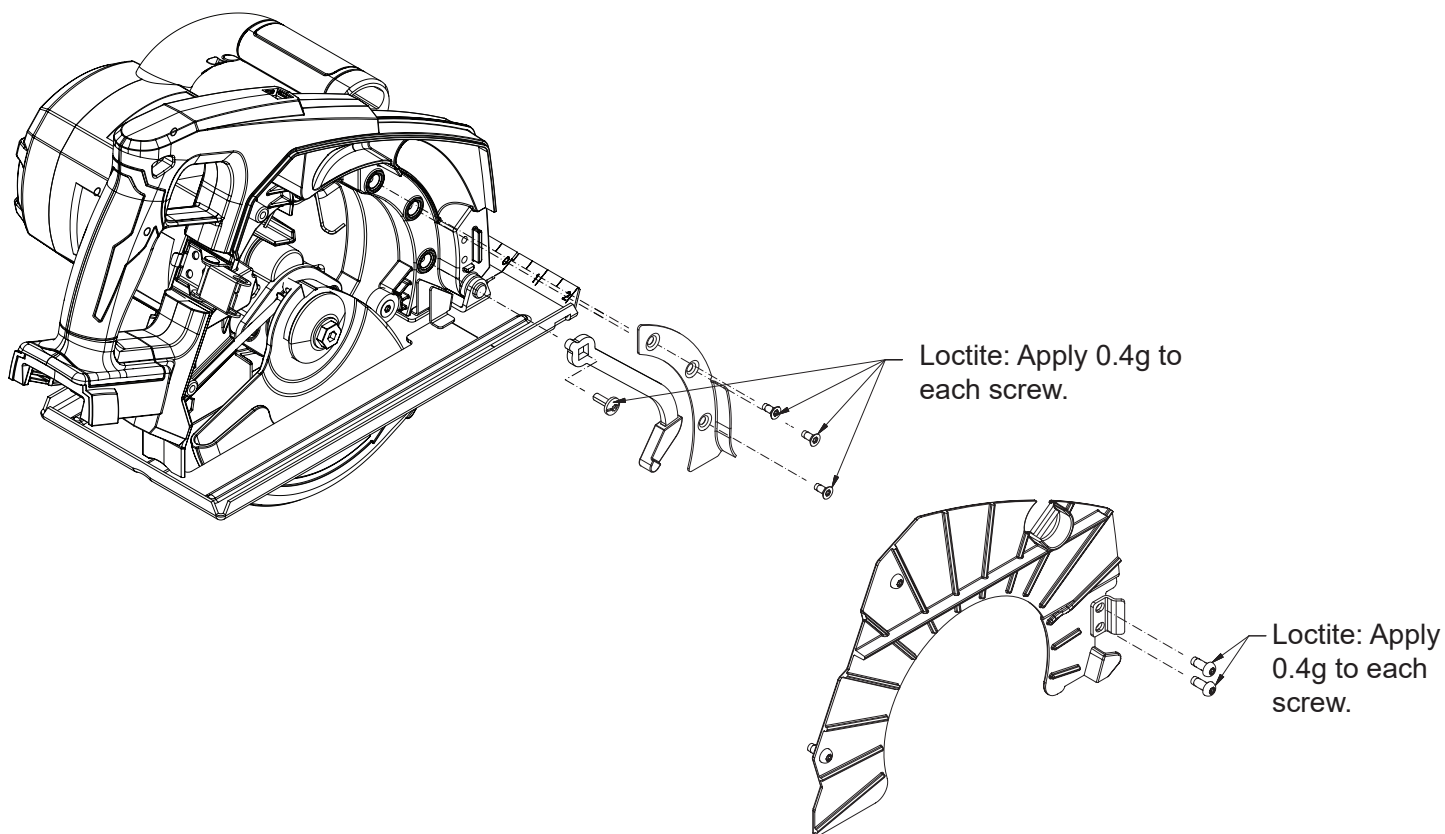
Lightly coat the rotor bearing bore of Gearcase Assembly (92) prior to installing Rotor Assembly (91).

Fill back end of Spindle/Gear Assembly (93) with grease, making sure that the teeth of gear are completely covered.



Functionally check switch lock-out #67 by attempting to turn on tool by applying a reasonable amount of force, up to 8 lbs., to the switch trigger #83. The tool must not turn on. Release trigger. Actuate the lock-out lever and apply a reasonable amount of force to the switch trigger. The tool must turn on. While trigger is still in the "ON" position, release the lock-out. Release the trigger. The tool must stop and the lock-out lever must again prevent the actuation of the switch. Repeat the switch check two more times.

Functionally check the lower guard #26, with saw set at full depth. Place saw upside down with the shoe horizontal. Fully retract the guard and then release it. The guard must return briskly.



**Wiring:**

