



SERVICE PARTS

BULLETIN NO.
54-38-2365

SPECIFY CATALOG NO. AND SERIAL NO. WHEN ORDERING PARTS		REVISED BULLETIN	DATE
M18 FUEL™ Variable Speed Braking Angle Grinder w/ Slide Switch			May 2022
CATALOG NO.	2889-20	STARTING SERIAL NO.	L71A
		WIRING INSTRUCTION SEE PAGE 2	

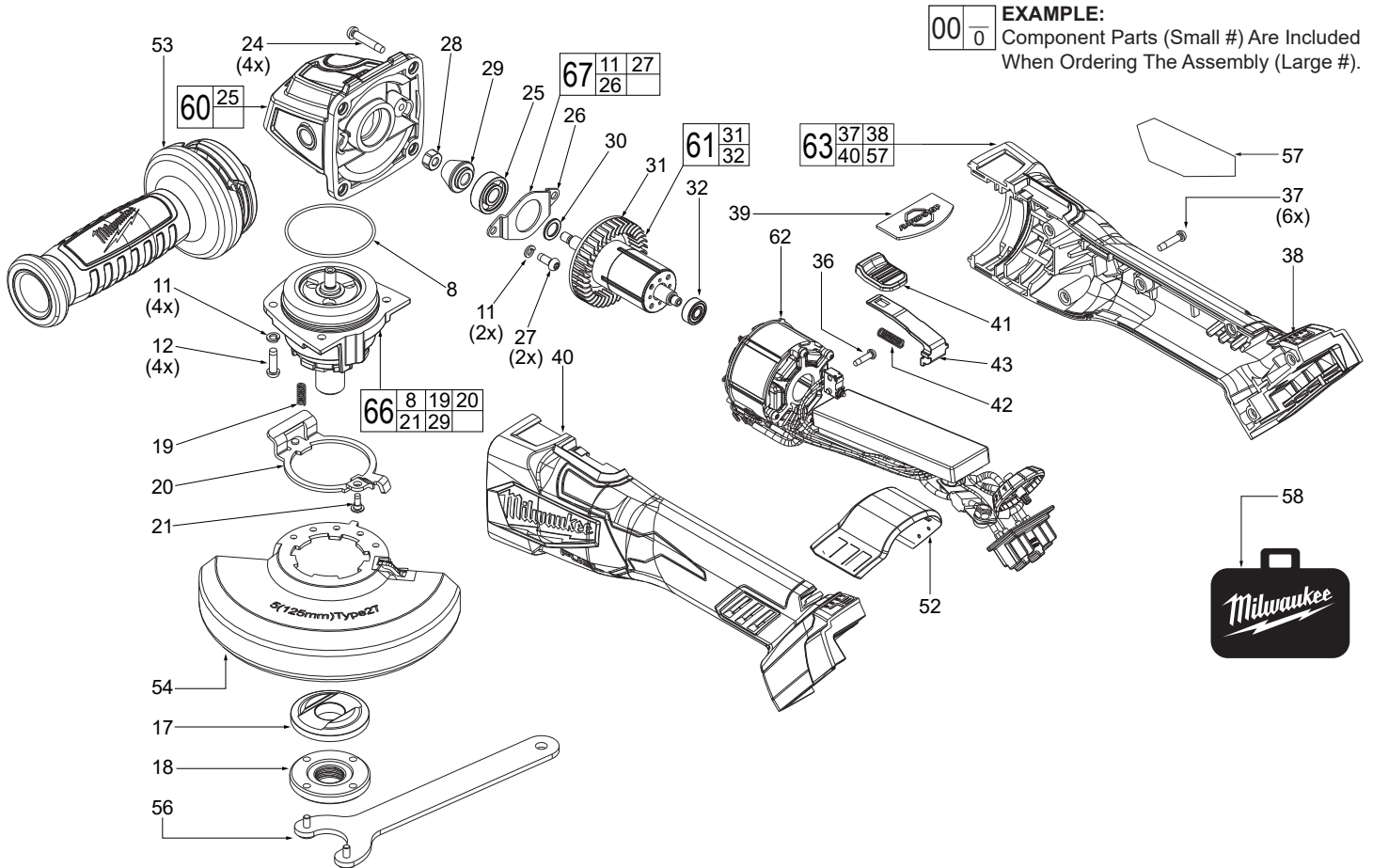
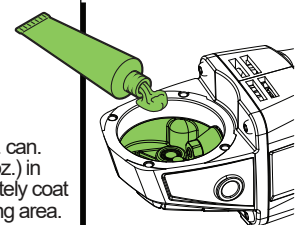


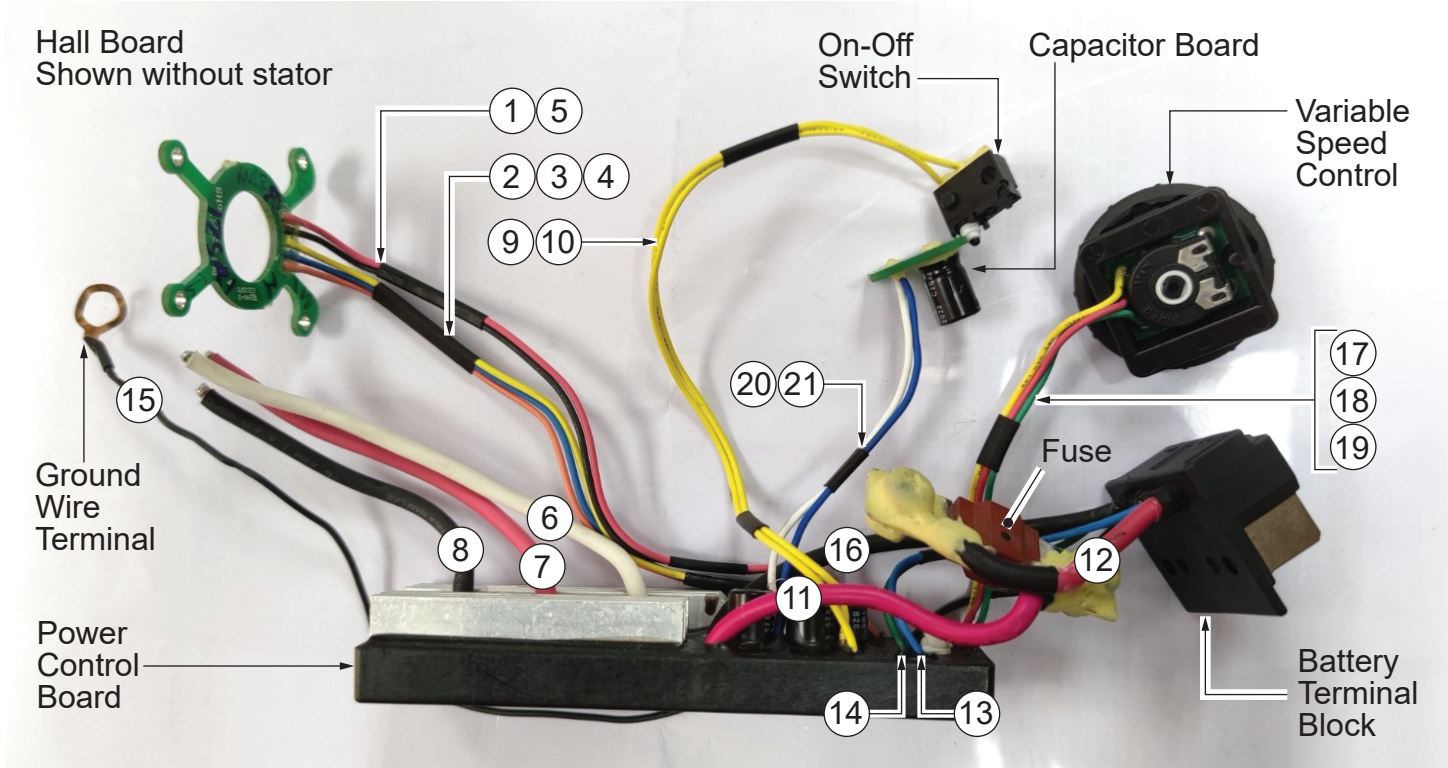
FIG.	PART NO.	DESCRIPTION OF PART	NO. REQ.
	8	34-40-0330 O-Ring	(1)
	11	05-90-0225 Spring Washer	(6)
	12	05-78-5316 M4 x 14mm Pan Hd. Taptite T-20 Screw	(4)
	17	43-34-3000 Backing Flange Disc	(1)
	18	44-40-7100 5/8" Flange Nut	(1)
	19	40-50-0386 Spring	(1)
	20	44-20-0091 Guard Locking Tang	(1)
	21	45-04-0031 M3 x 8.5mm Pan Washer Hd. Phillips Screw	(1)
	24	05-88-1255 M4 x 22mm Pan Hd. ST T-20 Screw	(4)
	25	02-04-0621 Ball Bearing	(1)
	26	44-86-2800 Bearing Retainer	(1)
	27	05-78-0105 M4 x 10mm Pan Hd. T-20 Screw	(2)
	28	05-55-0620 M5 Hex Nut	(1)
	29	Pinion Gear	(1)
	30	45-88-0406 Washer	(1)
	31	Rotor	(1)
	32	02-04-0111 Ball Bearing	(1)
	36	06-82-1087 M3 x 12mm Pan Hd. ST T-10 Screw	(1)
	37	06-82-2025 M3.5 x 16mm Pan Hd. ST T-10 Screw	(6)
	38	Right Housing Halve - Cover	(1)
	39	43-84-0207 Rapid Stop Plate	(1)
	40	Left Housing Halve - Support	(1)
	41	42-42-0147 Lock-On Button	(1)
	42	40-50-0217 Spring	(1)
	43	31-92-0286 Slide Pole	(1)
	52	31-15-0103 Dust Cover	(1)
	53	42-62-0125 Side Handle Assembly	(1)

FIG.	PART NO.	DESCRIPTION OF PART	NO. REQ.
54	43-54-1221	5" Type 27 Guard Assembly (Std. Equip. Shown)	(1)
	43-54-1230	5" Type 1 Guard Assembly (Optional, Not Shown)	(1)
	43-54-1200	4.5" Type 27 Guard Assembly (Optional, Not Shown)	(1)
	43-54-1210	4.5" Type 1 Guard Assembly (Optional, Not Shown)	(1)
55	43-54-4010	5" Plastic Clip-On Guard Attach. (Not Shown)	(1)
56	49-96-7215	Spanner Wrench	(1)
57	12-20-0367	Service Nameplate	(1)
58	50-55-3560	Contractor Bag	(1)
60	14-29-0098	Gearcase Assembly	(1)
61	23-40-6010	Rotor Assembly	(1)
62	14-20-0478	Electronic Assembly	(1)
63	14-38-0103	Housing Kit	(1)
66	14-73-2000	5/8"-11 Spindle Hub Assembly	(1)
67	14-62-0300	Bearing Retaining Plate Kit	(1)

***LUBRICATION NOTE:**
When servicing the Gear Case Assembly, 90-95% of the old grease must be removed prior to new grease being added.

FIG. LUBRICATION*
56 Type 'J' Grease, No. 49-08-4220, 1 lb. can. Place approximately 16 grams (.562 oz.) in gearcase cavity, being sure to completely coat all teeth of bevel pinion and surrounding area.





Wire	Color	Orientation
1	Red	From Hall Board to Power Control Board
2	Pink	From Hall Board to Power Control Board
3	Blue	From Hall Board to Power Control Board
4	Yellow	From Hall Board to Power Control Board
5	Black	From Hall Board to Power Control Board
6	White	From Power Control Board to Stator
7	Red	From Power Control Board to Stator
8	Black	From Power Control Board to Stator
9	Yellow	From Power Control Board to On-Off Switch
10	Yellow	From Power Control Board to On-Off Switch
11	Red	From Power Control Board to Fuse
12	Red	From Battery Terminal Block to Fuse
13	Blue	From Power Control Board to Battery Terminal Block
14	Green	From Power Control Board to Battery Terminal Block
15	Black	HV Wire. From Battery Terminal Block to Gearcase
16	Black	From Power Control Board to Battery Terminal Block
17	Red	From Power Control Board to Variable Speed Control
18	Green	From Power Control Board to Variable Speed Control
19	Yellow	From Power Control Board to Variable Speed Control
20	White	From Power Control Board to Capacitor Board
21	Blue	From Power Control Board to Capacitor Board

As an aid to reassembly, take notice of wire routing and position in wire guides and traps while dismantling tool.

Be sure that all components of the electronics kit are seated firmly and squarely in the housing recesses.

Avoid pinched wires, be sure that all wires and sleeves are pressed completely down in wire guides and traps.

Prior to securing the housing cover onto the housing support, be sure that there are no interferences.

Before installing the battery, check for proper functionality of paddle trigger.

Install battery and depress paddle trigger to assure tool is operating properly.