

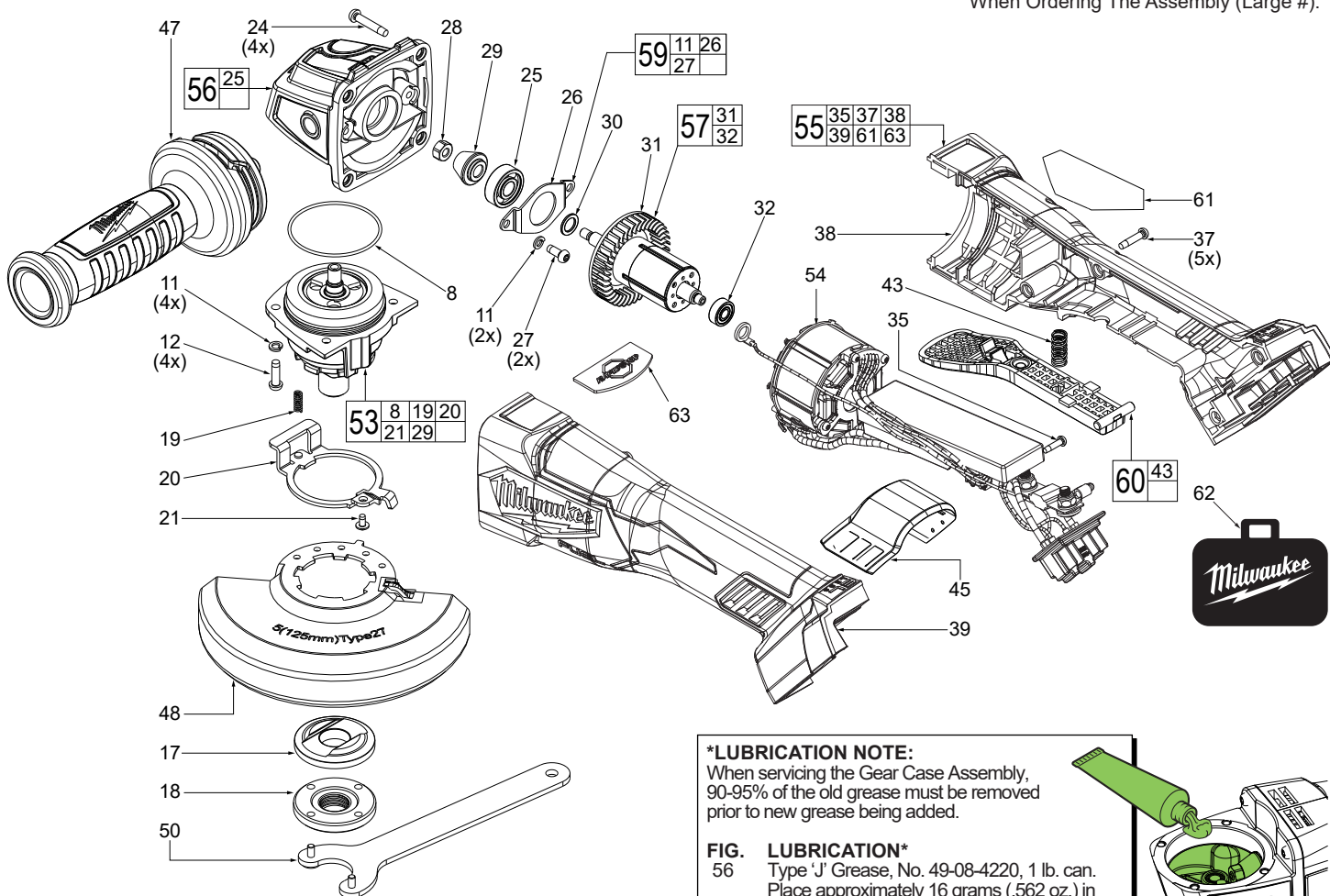


SERVICE PARTS LIST

BULLETIN NO.
54-38-7026

SPECIFY CATALOG NO. AND SERIAL NO. WHEN ORDERING PARTS		REVISED BULLETIN 54-38-7025	DATE June 2022
M18 FUEL™ Angle Grinder with Paddle Switch & Lock-Off		WIRING INSTRUCTION SEE PAGE 2	
CATALOG NO.	2880-20	STARTING SERIAL NO.	L64B

EXAMPLE:
Component Parts (Small #) Are Included
When Ordering The Assembly (Large #).



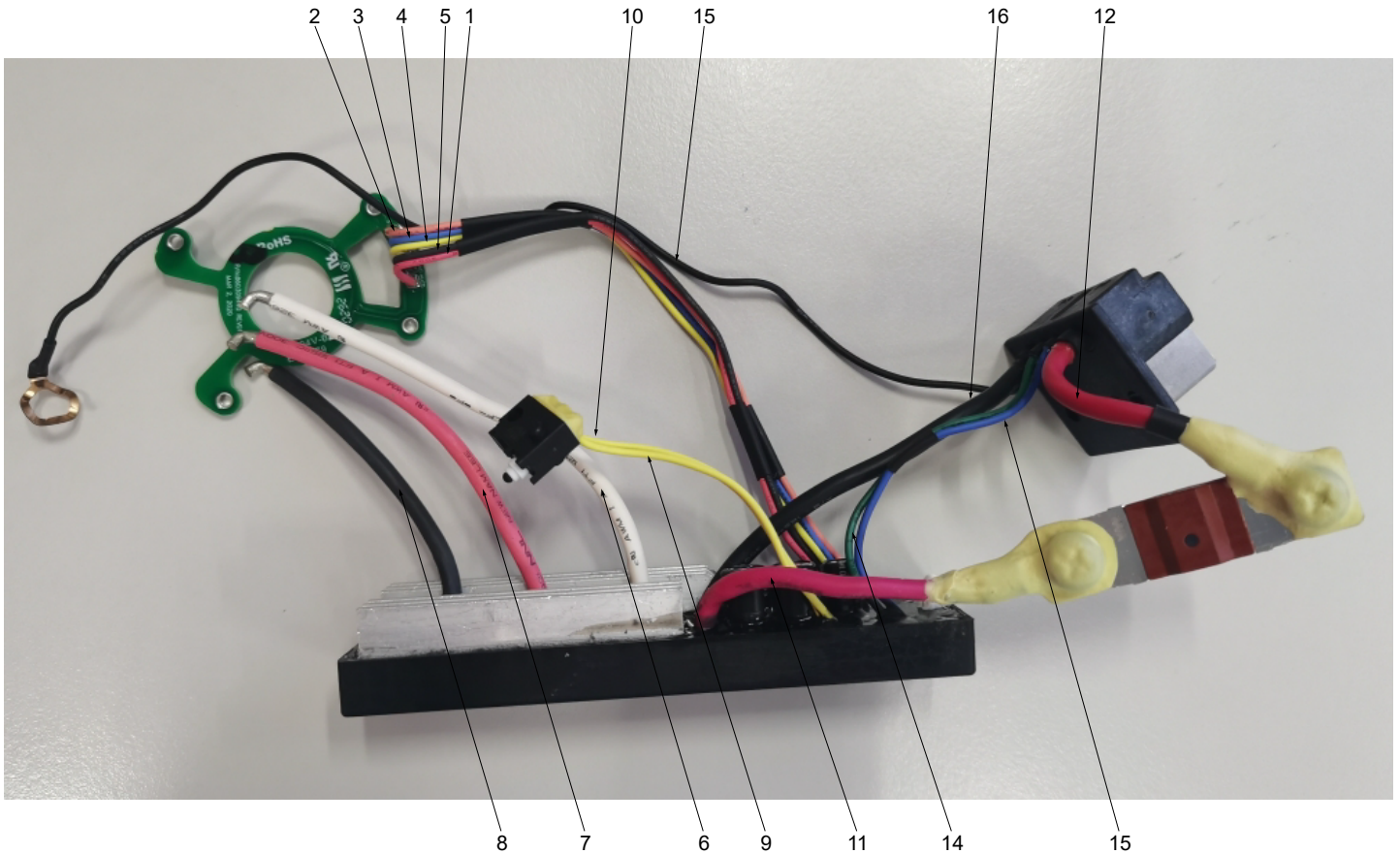
★ = Part number change from previous service parts list.

***LUBRICATION NOTE:**
When servicing the Gear Case Assembly, 90-95% of the old grease must be removed prior to new grease being added.

FIG. LUBRICATION*
56 Type 'J' Grease, No. 49-08-4220, 1 lb. can. Place approximately 16 grams (.562 oz.) in gearcase cavity, being sure to completely coat all teeth of bevel pinion and surrounding area.

FIG.	PART NO.	DESCRIPTION OF PART	NO. REQ.	FIG.	PART NO.	DESCRIPTION OF PART	NO. REQ.
8	34-40-0330	O-Ring	(1)	43	40-50-0243	Spring	(1)
11	05-90-0225	Spring Washer	(6)	45	31-15-0103	Dust Cover	(1)
12	05-78-5316	M4 x 14mm Pan Hd. Taptite T-20 Screw	(4)	47	42-62-0125	Side Handle	(1)
17	43-34-3000	Backing Flange	(1)	48	43-54-1221	5" Type 27 Guard Assembly (Std Equip Shown)	(1)
18	44-40-7100	5/8" Flange Nut	(1)		43-54-4010	Clip-On Guard (Not Shown)	(1)
19	40-50-0386	Spring	(1)		43-54-1230	5" Type 1 Guard Assembly (Optional, Not Shown)	(1)
20	44-20-0091	Lock Tang	(1)		43-54-1200	4.5" Type 27 Guard Assembly (Optional, Not Shown)	(1)
21	45-04-0031	Shoulder Taptite Screw	(1)		43-54-1210	4.5" Type 1 Guard Assembly (Optional, Not Shown)	(1)
24	05-88-1255	M4 x 22mm Pan Hd. ST T-20 Screw	(4)	50	49-96-7215	Wrench	(1)
25	02-40-0621	Ball Bearing	(1)	53	14-73-2000	Spindle Hub Assembly	(1)
26	44-86-2800	Bearing Retainer	(1)	★ 54	14-20-0446	Electronics Assembly	(1)
27	05-78-0105	M4 x 10mm Pan Hd. Tapt. T-20 Screw	(2)	★ 55	14-38-0095	Housing Kit	(1)
28	05-55-0620	Hex Nut	(1)	56	14-30-1110	Gearcase Assembly	(1)
29	-----	Bevel Pinion	(1)	57	23-40-6010	Rotor Assy Kit	(1)
30	45-88-0406	Washer	(1)	59	14-62-0300	Bearing Retainer Kit	(1)
31	-----	Rotor	(1)	60	31-92-1060	Paddle Trigger Assy	(1)
32	02-04-0111	Ball Bearing	(1)	61	12-20-0285	Service Nameplate	(1)
35	06-82-1087	M3 x 12mm Pan Hd. ST T-10 Screw	(1)	62	50-55-3560	Contractor Bag	(1)
37	06-82-2025	M3.5 x 16mm Pan Hd. ST T-10 Screw	(5)	63	-----	Rapid Stop Plate	(1)
38	-----	Handle Cover	(1)				
39	-----	Handle Support	(1)				

WIRE ROUTING AND TRAPPING for the ELECTRONICS KIT in the HANDLE SUPPORT (Left Handle Halve)



- | | | | |
|-----------|--|------------|--|
| 1. Red | Connect with Power Control Board and Hall Board. | 9. Yellow | Connect with Switch and Power Control Board. |
| 2. Orange | Connect with Power Control Board and Hall Board. | 10. Yellow | Connect with Switch and Power Control Board. |
| 3. Blue | Connect with Power Control Board and Hall Board. | 11. Red | Connect with Power Control Board and Fuse 1. |
| 4. Yellow | Connect with Power Control Board and Hall Board. | 12. Red | Connect with Terminal Block and Fuse 2. |
| 5. Black | Connect with Power Control Board and Hall Board. | 13. Blue | Connect with Power Control Board and Terminal Block. |
| 6. White | Connect with Power Control Board and Hall Motor. | 14. Green | Connect with Power Control Board and Terminal Block. |
| 7. Red | Connect with Power Control Board and Hall Motor. | 15. Black | Connect with Gearcase and Terminal Block. |
| 8. Black | Connect with Power Control Board and Hall Motor. | 16. Black | Connect with Power Control Board and Terminal Block. |